

 5
  2
  2

14 Kobe Street, Ropes Crossing

Deposit Taken
 312 sqm

Designed for Family Living



Promoting a comfortable family lifestyle of modern convenience, this superb brick residence combines quality finishes with contemporary style. The home boasts 3 generous sized bedrooms, spacious & open plan living areas and an entertainer's yard.

Encapsulating effortless contemporary living in an established neighbourhood, this stunningly designed home reveals high-quality finishes over a tastefully styled layout. With all the hard work already done, all you need to do is unpack and move in. Positioned close to all local amenities including schools, child day care, parks and bus stops, this is sure to make for comfortable living.

Features include;

- + Five generous bedrooms, four with built in wardrobes
- + Palatial master suite featuring a deluxe ensuite and walk in wardrobe
- + Contemporary kitchen with stainless steel appliances, 5 burner gas cook top, dishwasher, a breakfast bar and a pantry
- + Multiple living areas
- + Guest powder room conveniently located on the ground floor
- + Modern family bathroom featuring a huge corner bathtub, shower and elegant tiles
- + Ducted air-conditioning throughout
- + Alarm System
- + Landscaped and manicured front and back gardens

- + Natural colour scheme throughout
- + Double garage with internal access
- + Additional storage space under stairs

For further information please contact our friendly staff on 9673 2200.

Disclaimer: We have been furnished with above information, however, Laing + Simmons gives no guarantees, undertakings or warnings concerning the accuracy, completeness or up-to-date nature of the information provided. All interested parties are responsible for their own independent enquiries in order to determine whether or not this information is in fact accurate.

Links

[Click to view on our website](http://www.lsstmarys.com.au/property-for-sale.html)

<http://www.lsstmarys.com.au/property-for-sale.html>

Words That Describe This Property

FIVE GENEROUS SIZED BEDROOMS

PALATIAL MASTER SUITE

CONTEMPORARY KITCHEN

14 Kobe Street, Ropes Crossing

DUCTED AIR-CONDITIONING

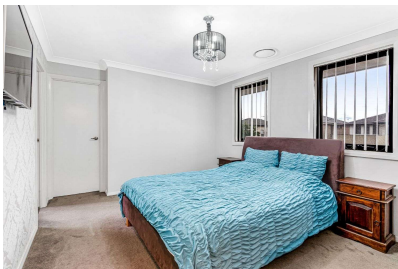
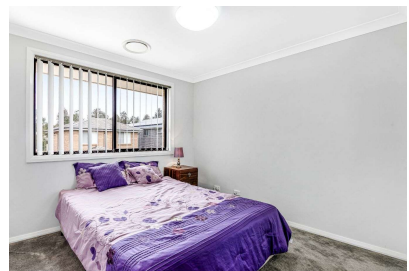
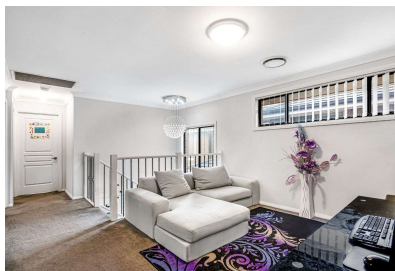
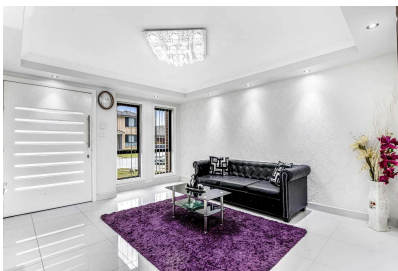
INTERNAL LAUNDRY

DOUBLE GARAGE

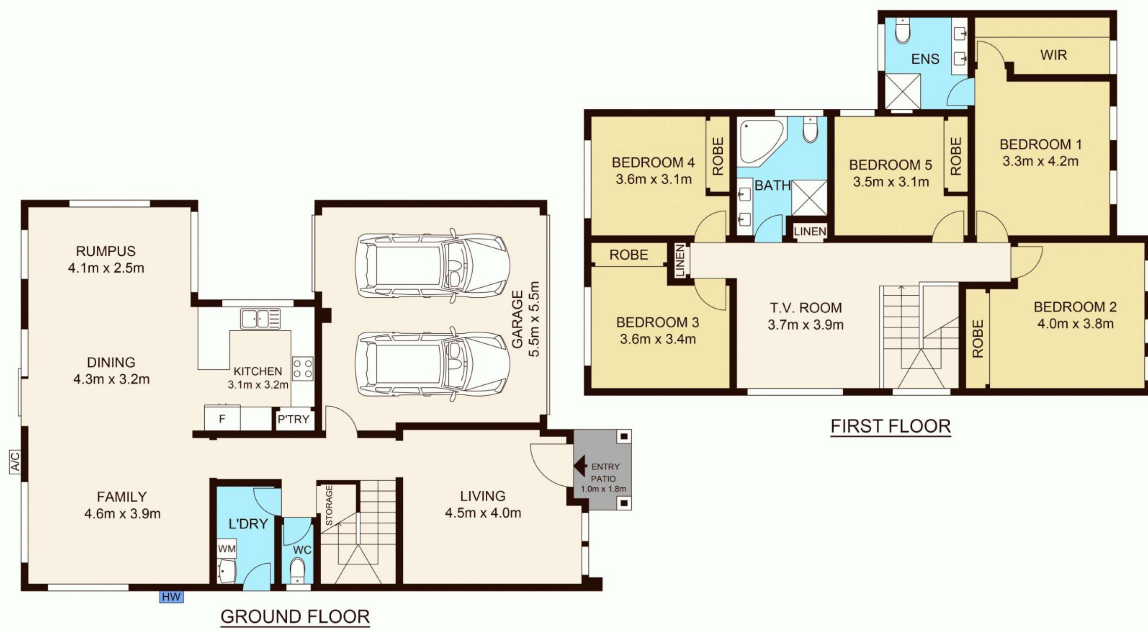
Location Map



Other Views



Floor Plan 1



14 Kobe Street, ROPES CROSSING

Not to scale • All measurements are approximate • Drawn for marketing purposes only • Floorplan by © Industrie Media



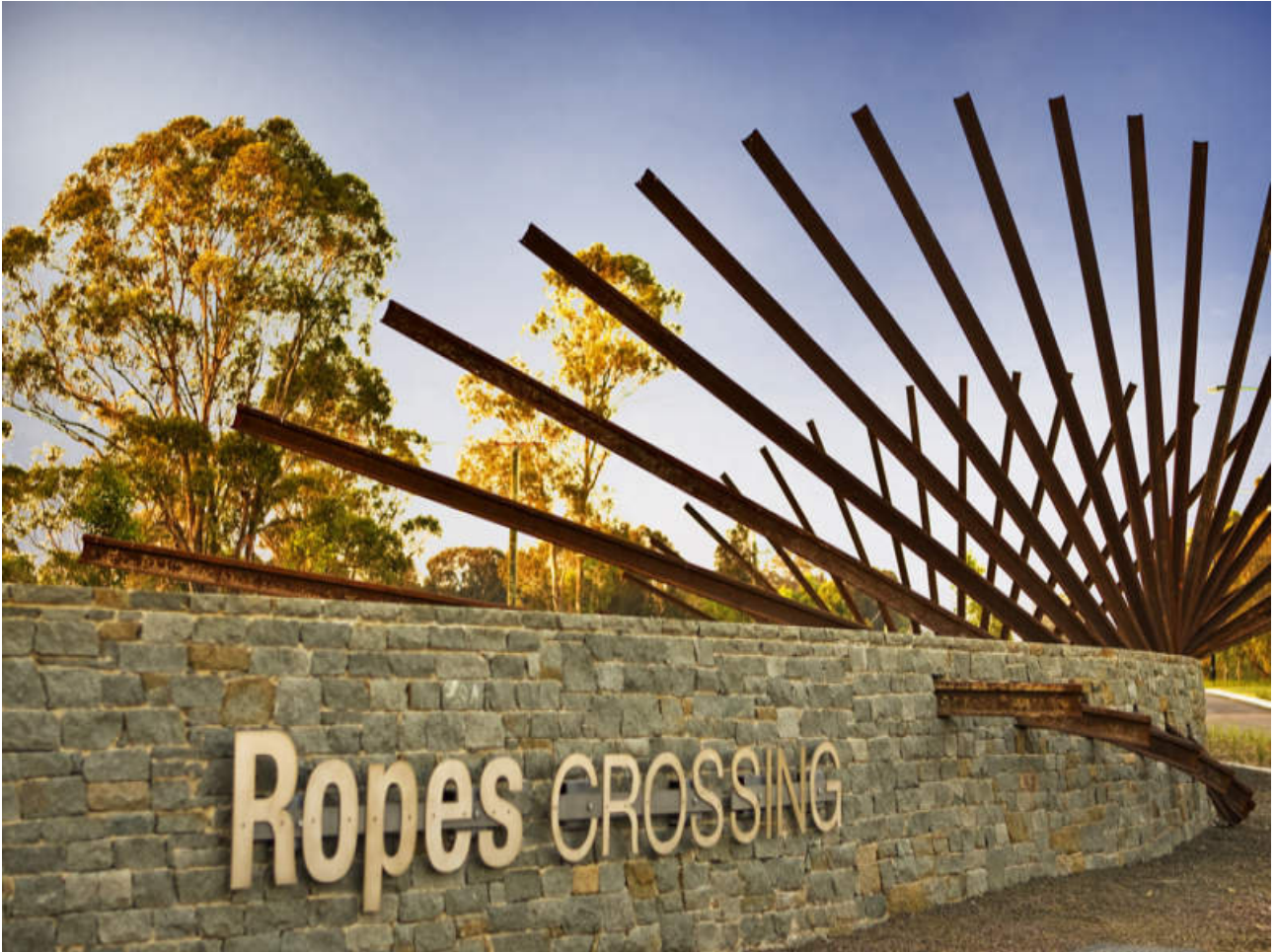
Contract of Sale

Links

[Contract of Sale](#)

http://ls.lswebbooks.com.au/module_resources/pdf_module/7662/90_14KobeCOS.pdf

Around The Area



This amazing property is almost a stones throw from the heart of Ropes Crossing.

Convenience is key as they are located close to all amenities including:

- Coles Shopping Centre
- Gourmet Cafes
- Newsagency
- Pharmacy
- Medical Centre
- Takeaway Restaurants
- Beauty Salons

Laing+Simmons

St Marys • Ropes Crossing

At Laing+Simmons St Marys/Ropes Crossing we combine expertise across the full spectrum of real estate services with a genuine passion for the local area.

Under the leadership of experienced Director and passionate local Paul Abassi, Laing+Simmons St Marys/Ropes Crossing provides expert sales, property management, project marketing and valuation services to the established St Marys community as well as the expanding Ropes Crossing area.

We have a long history in the western Sydney area, previously operating as 101 Property Agents in St Marys before joining the respected Laing+Simmons network in 2012.

Over the years we have worked with a broad client base, consistently achieved outstanding results and honed our skills and experience to establish a unique, collaborative approach to client service.

We understand that for most people, the sale of their home is the most significant financial transaction they will ever undertake. From an emotional perspective, there is naturally a heightened sense of anxiety at this time and many find the process stressful.

Our approach is focused on alleviating this anxiety and stress and we achieve this by always operating an honest, transparent and genuine way. We work closely with you to ensure you are informed and comfortable with our sale campaign strategies, we take the time to listen to your needs and we'll always present you with an honest appraisal of the facts.

We realise that every home, and every client, is unique and we therefore tailor individual solutions to meet your individual needs. In short, we treat you with the respect you deserve.

Similarly, we understand the needs of landlords and tenants and we take great care in ensuring both parties enjoy the mutual benefits of a relationship with us. Our approach to property management is focused on achieving the best outcomes for everyone and we do this by keeping the lines of communication open, through careful attention to detail and by treating landlords and tenants with respect.

Links

[Laing+Simmons St Marys / Ropes Crossing](#)

lsre.com.au/st-marys